

SIMON ROBERTS

// THAT WHICH INSPIRES US





the Arts house

Exhibition
11 August

the Arts house
BREAKFAST

- Bacon Butties Deluxe + Two Americans £4.95
- Eggs Benedict £3.95
- Eggs Florentine £3.50
- Poached Eggs, Bacon, Beans & Toast £6.95
- Beans on Toast £3.50
- Poached Eggs on Toast £3.50
- Porridge, Yogurt & Honey £3.95
- Muesli, Yogurt & Honey £3.95
- Toast & Jam £3





// ABOUT THE COMMISSION

In 2012 Simon Roberts was commissioned to make a series of artworks that would help bring a sense of identity to acute inpatient departments within a major new hospital building in Bristol, UK. In response to this commission, Simon has created a new body of work reflecting the city's culture, landscape and history. His final set of photographs have been installed across seven floors within the new adult ward block and emergency department of the Bristol Royal Infirmary (BRI) hospital and are intended to enrich the hospital environment for patients and staff.

Simon's work for the BRI followed the pattern of much of his previous practice, that is, photographs that deal with the relationship between landscape and people, and notions of identity and belonging. His photographs provide a sense of context, evoking individuals and communities in their diverse surroundings while conveying a wealth of visual narratives for the viewer to explore. The final installed artworks explore the relationship that people living in the Bristol and South West have with their landscape, landmarks and pastimes, whilst depicting the multi-cultural and social diversity of the region.

As is common with his arts practice Simon also added a collaborative element to the commission, offering the public an opportunity to participate directly with the project. He felt it was important to give the public an opportunity to help steer the project, given that the BRI is at the heart of Bristol's community and that many people have an invested interest in the future of the hospital; be they former patients, current employees or visiting relatives.

Throughout the commission Simon worked with hospital staff and the local community, whilst also collaborating with cultural partners including M Shed, the Bristol Records Office and Artshine. He invited members of the public to submit their own photographs inspired by the region and over 1,400 were uploaded to the project website (www.beholdrespondinspire.com), which has become a permanent online gallery and legacy for the project. All of the public's photographs were used to create a series of unique collage pieces installed in the hospital.

The project, commissioned by local hospitals' charity Above & Beyond, was part of an arts programme for the BRI redevelopment, which consisted of a number of refurbishments and new builds for University Hospitals Bristol NHS Foundation Trust.

Commissioner: University Hospitals Bristol NHS Foundation Trust

Partners: Laing O'Rourke, Coda, M-Shed, Artshine, Bristol Records Office

Supported by: Above & Beyond Golden Gift Appeal

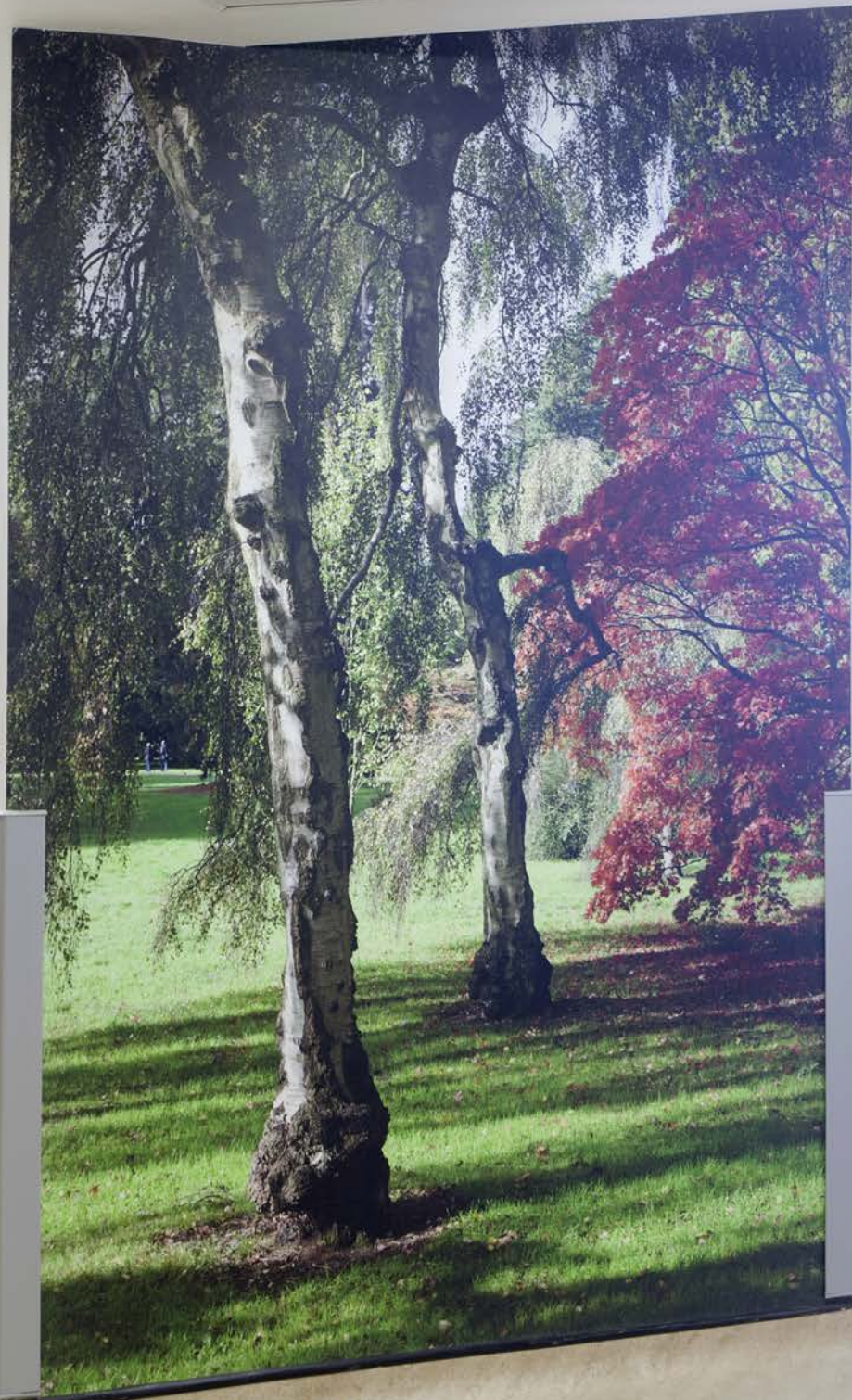
Produced by: Willis Newson



Nurse Base East









Beds
2-6

// BRI HOSPITAL - LEVEL 3 - PEOPLE AND PLACES

The artworks presented for Level 3 were considered to suit the needs of staff and patients on the General Medical Assessment Unit. There are a series of Simon's large-format landscape prints that reflect the unique culture, identity and interests of Bristol's community that the hospital serves. The prints have been curated as an exhibition located around the corridors of the ward to help encourage patient mobility.

Alongside Simon's work are a series of collage pieces made up of images submitted by the public during the commission. Patients, staff and local people uploaded their own pictures to the project website, which they felt responded to the themes of community, sustainability and inspiring change. Using these images, along with archive imagery of the city sourced from M-Shed, a museum all about Bristol, Simon created five themed collages representing the Bristol Suspension Bridge, the Bristol International Balloon Fiesta, architecture, people, regional landscapes of the South West and Bristol Harbourside.

Work was also placed in 4-bed wards, the relative waiting room and an interview room.





Beds
13-14



Beds 9 - 20 ↑







// BRI HOSPITAL - LEVEL 4 - BRISTOL HARBOURSIDE & THE PUBLIC GALLERY

The emphasis on Level 4, the Elderly Assessment Unit, was on artwork that reflects the importance of water, in particular Bristol's Harbourside, to the cultural heritage of the city. This ward is mainly for patients with dementia. Familiar scenarios and recognisable landscapes were chosen, since research suggests that these can create a safe environment that helps dementia patients to remain orientated, as well as providing familiarity and conversation cues. Alongside his own contemporary landscape scenes, Simon sourced historic photographs from the same locations to prompt memory.

In addition to this work he also installed 'The Public Gallery', a large five-metre collage based on a photograph he took of the Clifton Suspension Bridge, made up from over 2000 photographs submitted by the public and sourced from M-Shed's photographic archive.

Work was also placed in the relatives waiting room.



10-13







// BRI HOSPITAL - LEVEL 6 - THE SOUTH WEST

The artworks for Level 6 were selected to suit the needs of relatives on the Intensive Care Unit. The theme for the work on this level focuses on picturesque, calming landscapes taken around the South West, a region the ICU department serves. The work is contemplative and quiet, not least because the department contains a lot of technical equipment and can feel very clinical and impersonal. The aim of the photography is to provide something unique and soothing for relatives visiting the ward, many of whom are often experiencing a high state of anxiety and stress. The works are located in the relatives bedrooms, a bereavement room and interview rooms.





// BRI HOSPITAL - LEVEL 7 - ALLOTMENTS & COMMUNAL GARDENS

The work in the surgical wards on Level 7 features photographs that were made in allotments and communal gardens sited within the vicinity of the hospital. There are a series of framed landscape photographs exploring ideas of sustainability and the environment, alongside several 'fauna portraits', which reference botanical drawings and offer a domesticated view of nature. The latter were printed as floor-to-ceiling vinyl artworks and installed on the corridor walls. Together, these photographs reflect Bristol's interest in the green agenda and the fact the city has been awarded the European Green Capital (2015).

In addition to the corridors, work was also placed in the Sister's Ward office, the treatment room, an interview room and the ITU overnight stay bedrooms.







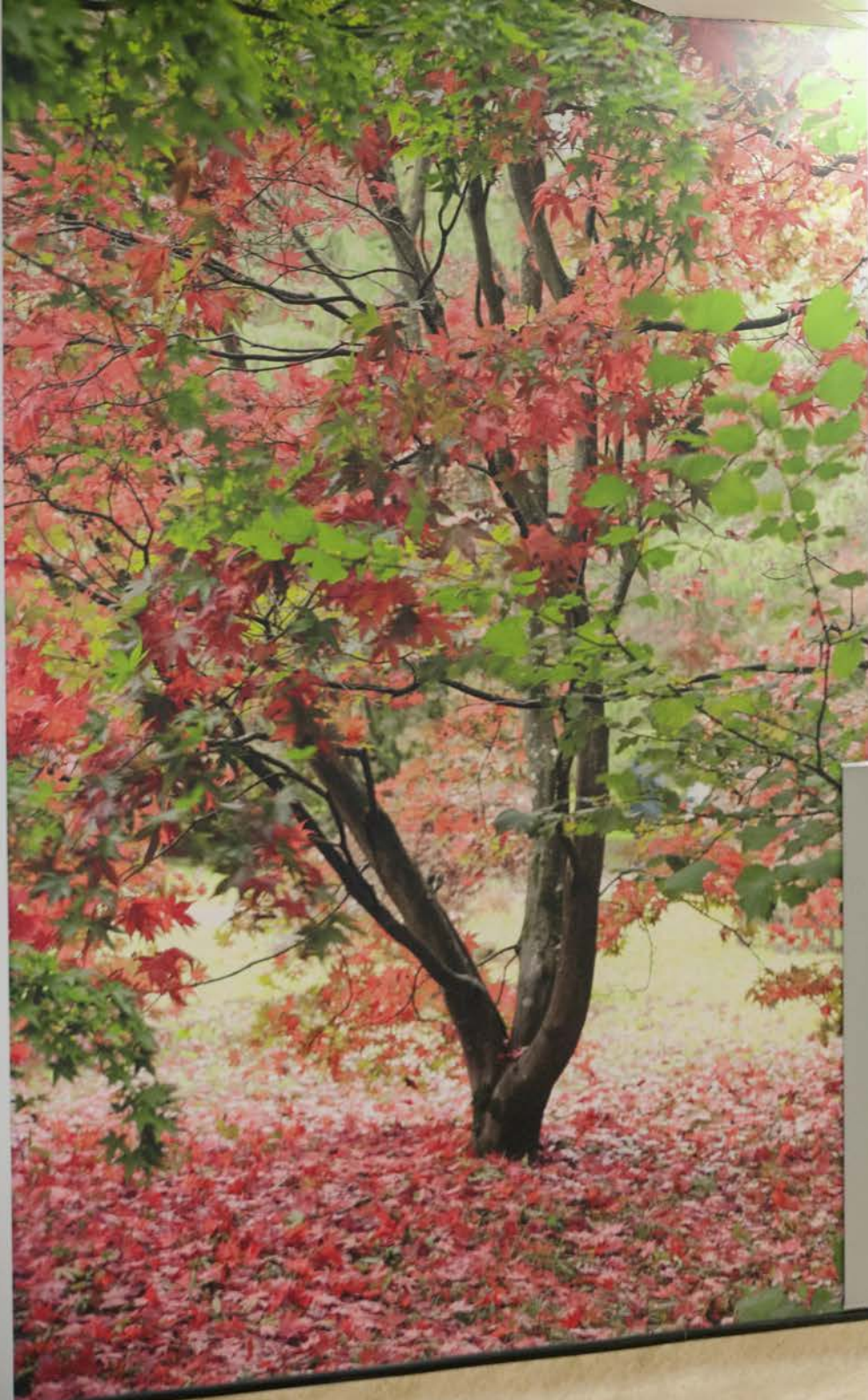
// BRI HOSPITAL - LEVEL 8 - WESTONBIRT, THE NATIONAL ARBORETUM

As with Level 7, Simon's work on this surgical ward concentrated on those subjects patients felt that was missing from the hospital environment; in particular images of flora and fauna. He chose to make a series of images at the Westonbirt National Arboretum, a historic, Victorian picturesque landscape and internationally important tree and shrub collection located near Bristol. The photographs were taken in Autumn, a period of the year Westonbirt is renowned for, with its array of vibrant autumnal colours. The corridors of Level 8 present a series of floor-to-ceiling portraits featuring Japanese maples, Persian Ironwood, Chinese Spindle and other life-size trees.

Work was also placed in the interview room and patients' day room.



Beds 16 - 24 ↑
Beds 25 - 32 ↗





// BRI HOSPITAL - LEVEL 9 - BRISTOL BALLOON FIESTA

The artworks for Level 9, the Young Chronically Ill and Infectious Ward, were created to be attractive to a younger audience. After consultation with patients, Simon chose to focus the work around the annual Bristol International Balloon Festival. In addition to presenting the work as landscape prints, a series of photographs were also placed on ceiling tiles above patient beds to help improve the immediate environment at a time of stress.

Work was also placed in the interview room.





// BRI HOSPITAL - EMERGENCY DEPARTMENT - LOOKING UP

The observation bays in the Emergency Department are small spaces with a lot of technical equipment and limited wall space, as a result Simon utilised the plain ceiling tiles, printing directly onto the tiles to create a series of images featuring canopies of trees and hot air balloons photographed from the perspective of someone looking up. In the waiting area, a busy place where individuals often experience high levels of anxiety and boredom, he placed three large landscape photographs of iconic Bristol scenes - the Clifton Suspension Bridge, the SS Great Britain and the Bristol Harbourside.







Location
A307

Location A307 - A317

A307



// BRI HOSPITAL - NURSES ARTWORK

During his research for the commission exploring historic photographs housed in the Bristol Records Office, Simon discovered two scrapbooks containing photographs and annotations made by nurses working in the BRI hospital from the early 1900s until the 1960s. Simon scanned pages of the scrapbooks and presented them as framed prints on the wall of several wards, installing them in and around the Nurses Bases (placed on Levels 3,4,7,8 and 9). The work is presented in recognition of the contribution the nursing profession has made to the BRI over its long history.



WWW.SIMONCROBERTS.COM



